



# GMT MONTHLY MEMBERSHIP PROGRESS REPORT

Results as of: 6/30/2024

Multiple District 25

LOCATION: INDIANA

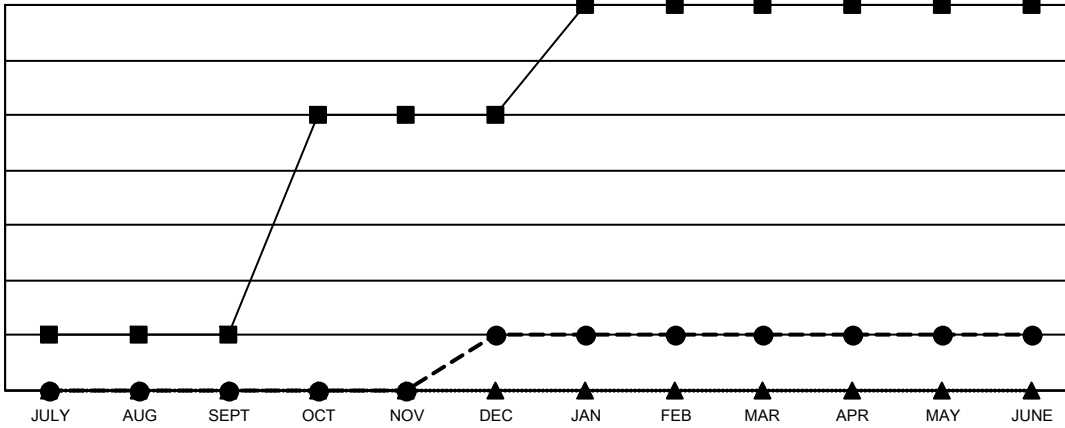
GMT: OPEN

GMT CA 1

Clubs			
RESULTS FOR 2023-2024			
QUARTER	NEW CLUB GOAL	NEW CLUBS	DROPPED CLUBS
JULY/AUG/SEPT	1	0	2
OCT/NOV/DEC	4	1	4
JAN/FEB/MAR	2	0	0
APR/MAY/JUNE	0	0	6

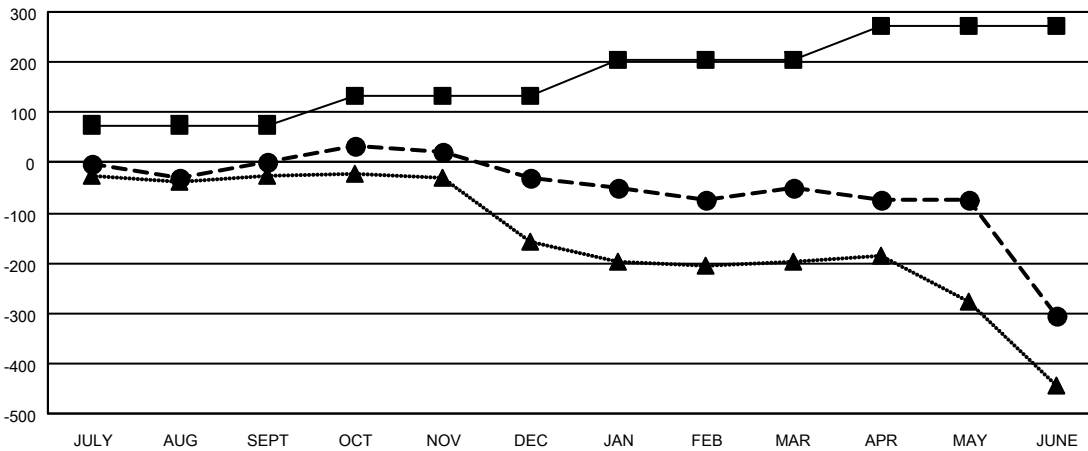
Members			
RESULTS FOR 2023-2024			
QUARTER	MEMBER GROWTH NET GOAL	MEMBER GROWTH ACTUAL	DROPPED MEMBERS ACTUAL (including transfers)
JULY/AUG/SEPT	75	212	195
OCT/NOV/DEC	58	197	206
JAN/FEB/MAR	73	140	144
APR/MAY/JUNE	67	169	393

**GOALS AND ACTUAL NEW CLUBS CUMULATIVE**



- - CURRENT YEAR GOALS FOR NEW CLUBS
- - CURRENT YEAR ACTUAL NEW CLUBS
- ▲ - LAST YEAR ACTUAL NEW CLUBS

**GOALS AND ACTUAL MEMBERS CUMULATIVE**



- - MEMBER GROWTH NET GOAL
- - MEMBER GROWTH ACTUAL
- ▲ - LAST YEAR MEMBERSHIP ACTUAL

DROPPED CLUBS: 12	186 CLUBS OF 334 ADDED 1 OR MORE NEW MEMBERS	<b>GENDER DISTRIBUTION</b> MALE 5,422 (67.98%) FEMALE 2,554 (32.02%)
<b>DROPPED MEMBERS</b> DECEASED 152 CLUB CANCELLED 61 OTHER 725 <b>TOTAL 938</b>	<a href="#">CLICK HERE FOR CUMULATIVE MEMBERSHIP DATA</a>	TOTAL FAMILY UNIT MEMBERS 2,011 FAMILY MEMBERS PAYING HALF DUES 1,035